



# DE{CODE} 20 23

THE VIRTUAL DEVELOPER CONFERENCE

# GO BEYOND: Build Smarter Mastering Migrations. Faster, easier, and safer ways to move your site from A to B.



**Kevin Hoffman**

Senior Product Manager,  
WP Migrate

WP Engine



**Austin Wendt**

Senior Product Manager,  
Local

WP Engine

## Agenda.

1. Introduce Three Types of Migrations
2. Define Our Migration Flow
3. Export an Existing Site
4. Import for Local Development
5. Perform a First-Time Deployment
6. Synchronize Two Environments Over Time

# Types of Migrations

## Remote-to-Local

Useful when:

- Beginning work on a client's existing site
- Troubleshooting in a low-risk environment
- Pulling down the latest database changes

## Local-to-Remote

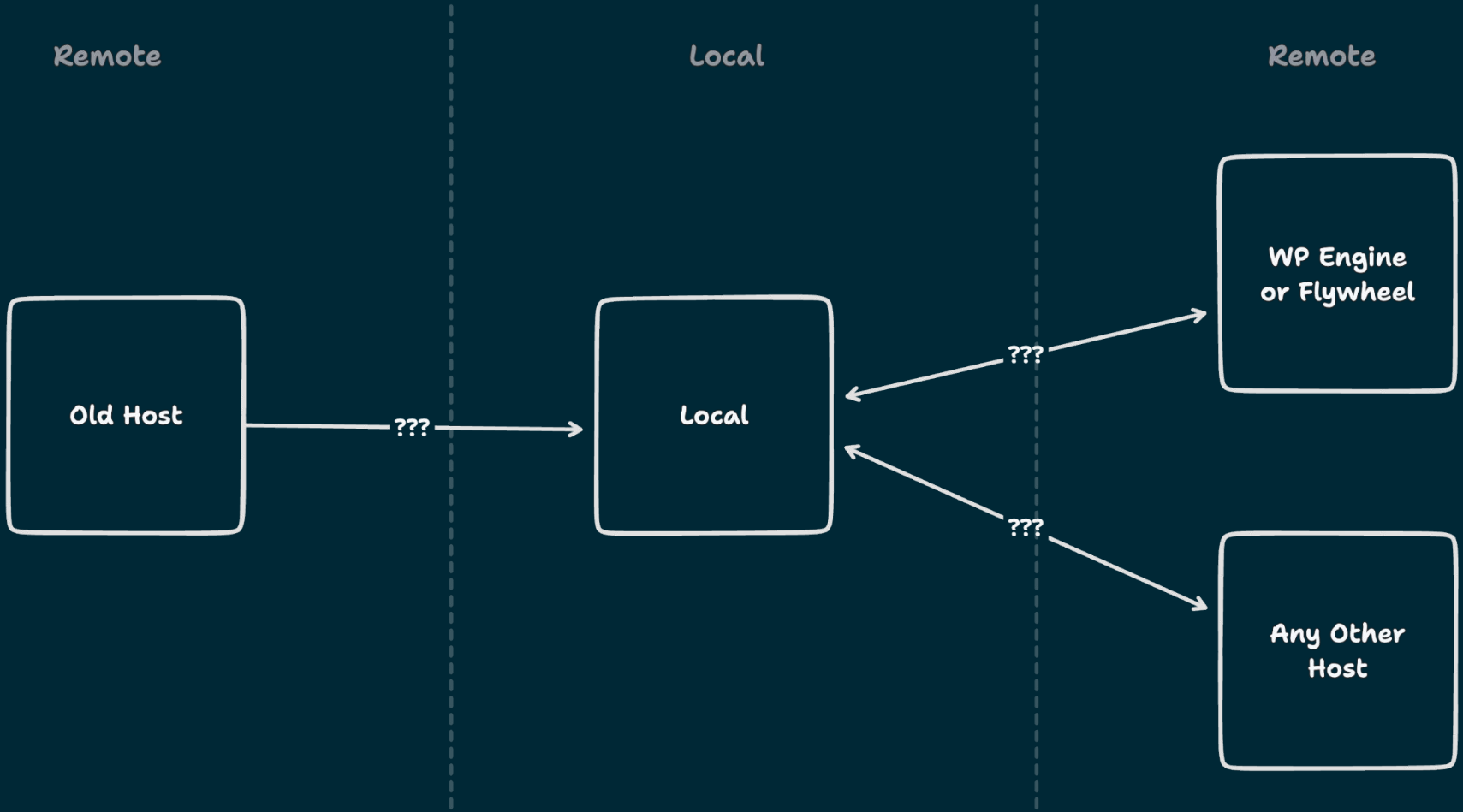
Useful when:

- Deploying a full site for the first time
- Pushing up code changes for themes or plugins

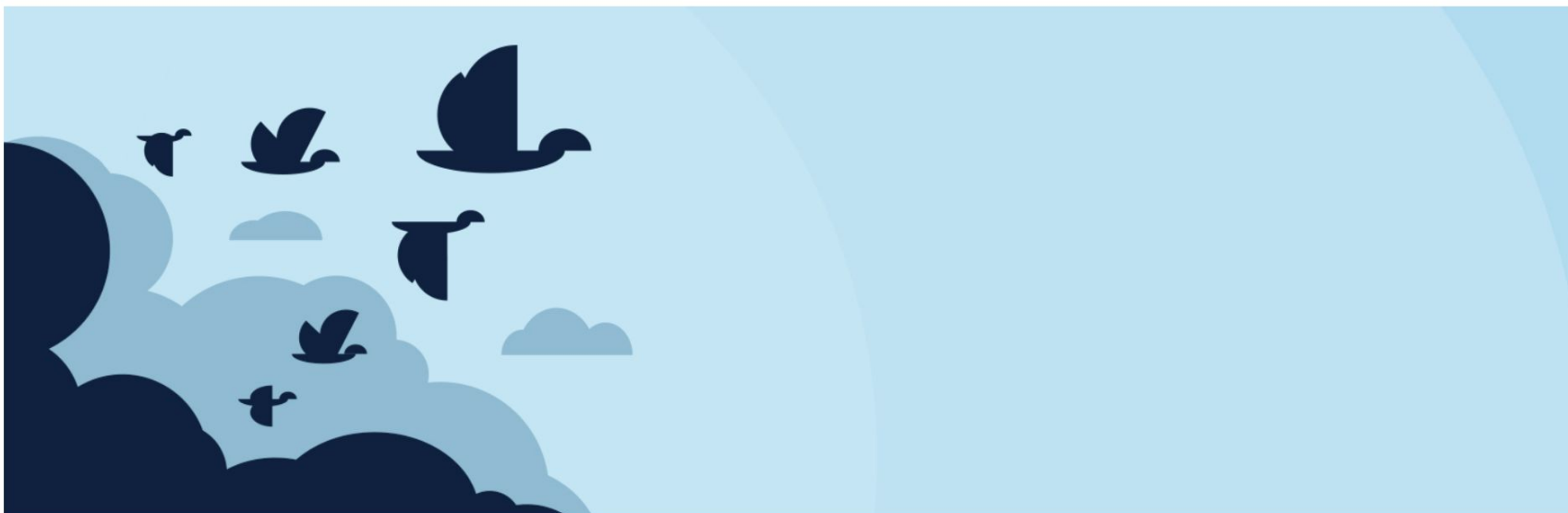
## Remote-to-Remote

Useful when:

- Switching hosting providers
- Moving between Dev, Staging, and Production environments



# **Exporting an Existing Site With WP Migrate**



## WP Migrate Lite – WordPress Migration Made Easy

By WP Engine

[Download](#)

# Why Full-Site Export?

- One-way migration
- No existing Local install
- Drag-and-drop import to Local
- Free backup!

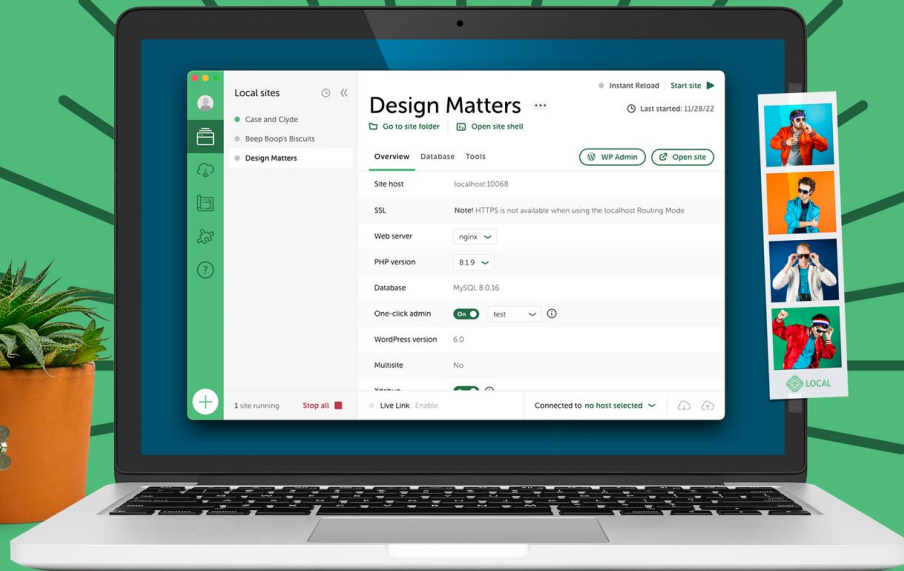


**VIDEO**

# **Importing an Existing Site With Local**



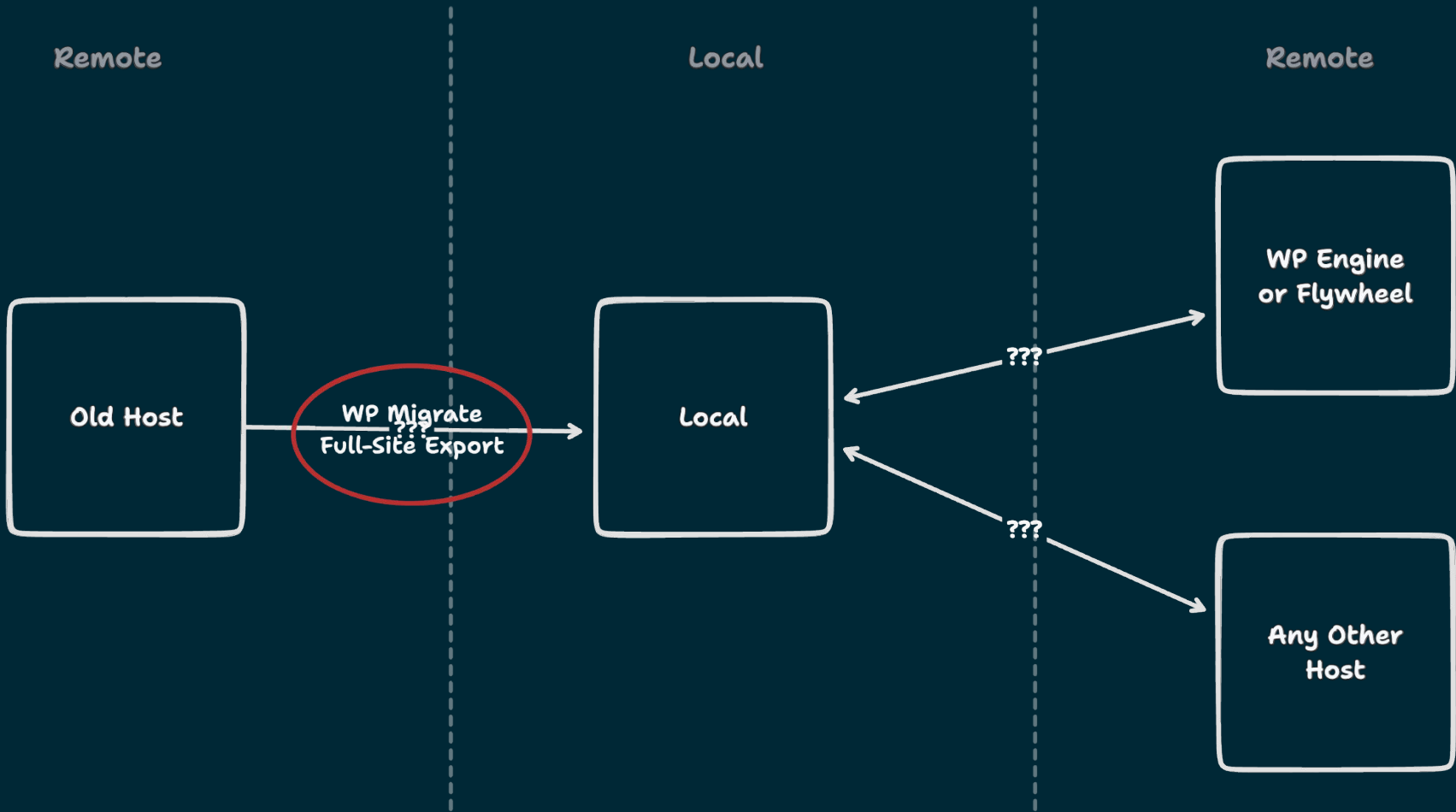
The #1 local WordPress development tool.



# Why Local?

- Low-risk development environment
- Closely mimic the production environment

**VIDEO**





# **Deploying to WP Engine/Flywheel With Connect**

# Why Full-Site Deployment?

- First-time deployment of entire site to the host
- Include entire themes/plugin changes
- Completely overwrite current site



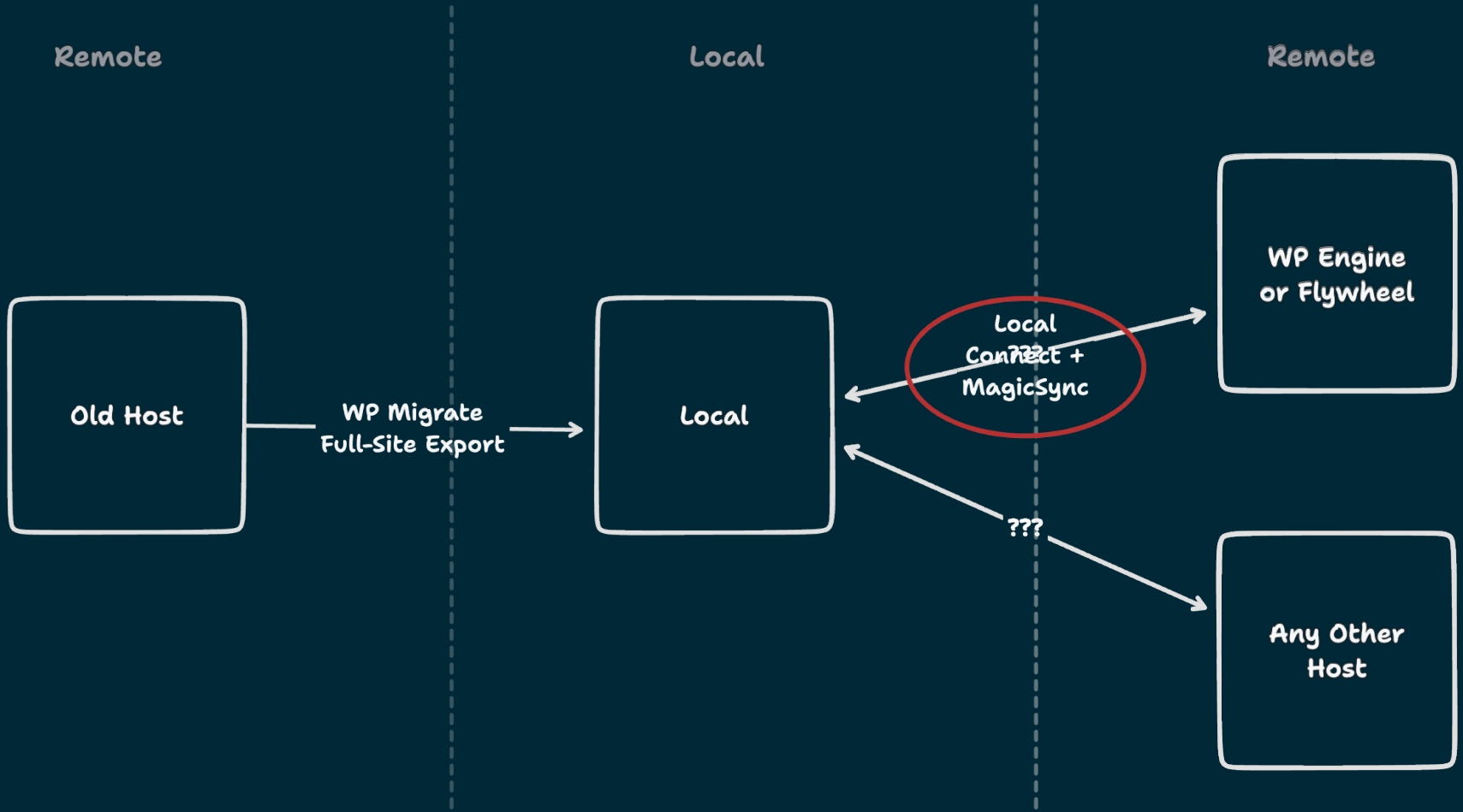
**VIDEO**

# **Synchronizing Environments With MagicSync**

# Why Incremental Migration?

- Making smaller, partial changes to an existing site
- Pick and choose the files you want to include
- Ability to exclude certain files (like media!)

**VIDEO**





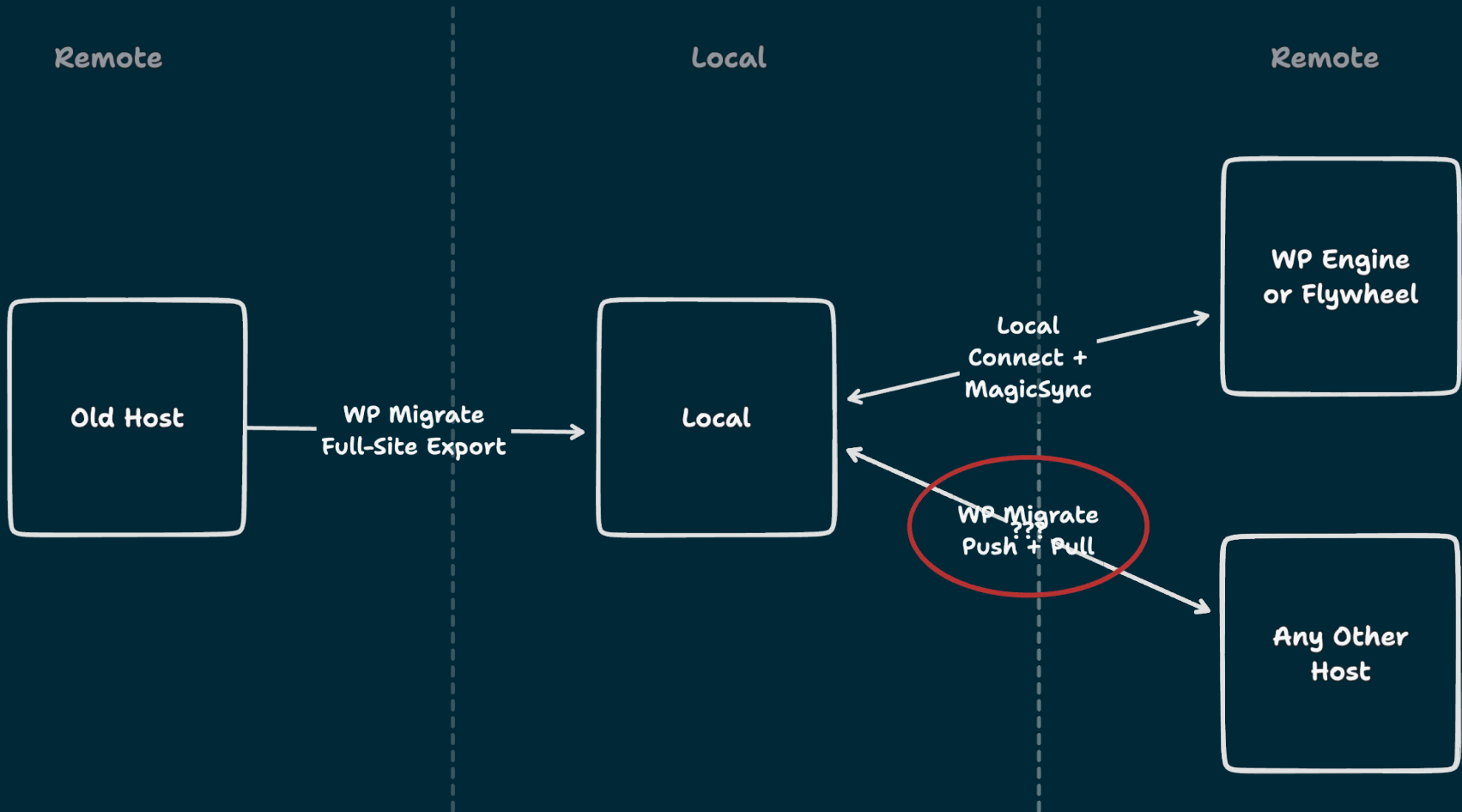
# **Pushing & Pulling With WP Migrate**

## Why Push/Pull?

- Two-Way migration
- Both sites already exist
- Requires a little more upfront investment for long-term payoff
- Handles incremental changes over time

**VIDEO**





# Thank you.

**Kevin Hoffman**

Senior Product Manager,  
WP Migrate

@WPMigrateDBPro

[kevin.hoffman@wpengine.com](mailto:kevin.hoffman@wpengine.com)

**Austin Wendt**

Senior Product Manager,  
Local

@LocalWP

[austin.wendt@wpengine.com](mailto:austin.wendt@wpengine.com)



# DE{CODE} 20 23

THE VIRTUAL DEVELOPER CONFERENCE